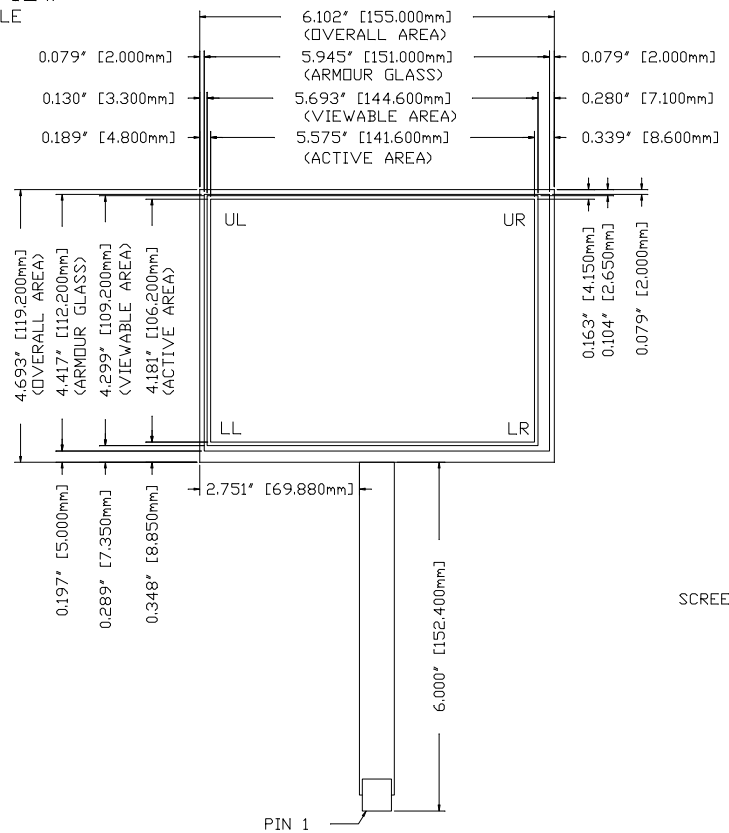


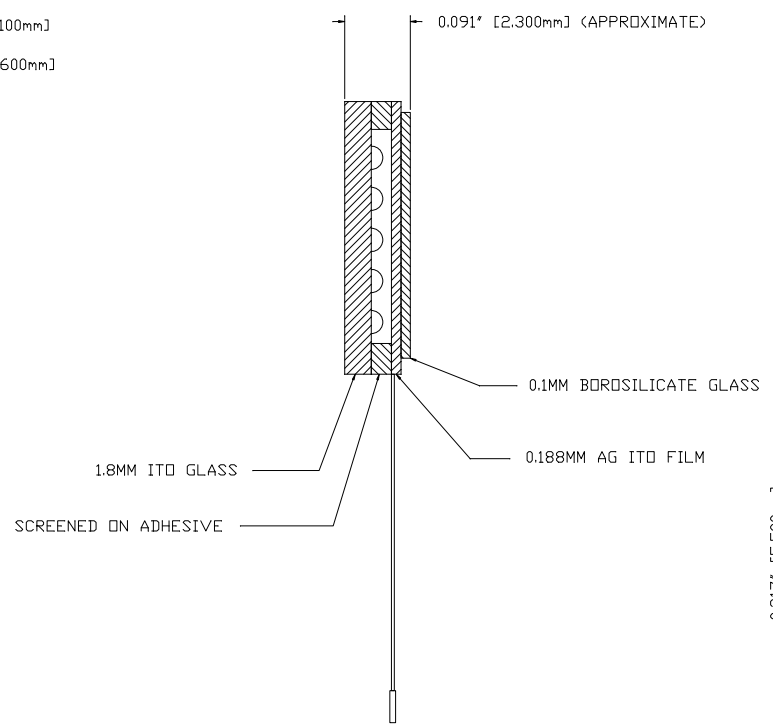
THIS DRAWING IS THE PROPERTY OF AD METRO. IT IS TO BE USED ONLY FOR THE PROJECT AND DATE SPECIFIED HEREON. IT IS NOT TO BE REPRODUCED, COPIED, OR TRANSMITTED IN ANY FORM OR BY ANY MEANS, ELECTRONIC OR MECHANICAL, INCLUDING PHOTOCOPYING, RECORDING, OR BY ANY INFORMATION STORAGE AND RETRIEVAL SYSTEM, WITHOUT THE WRITTEN PERMISSION OF AD METRO.

REVISIONS			
LET	DESCRIPTION	DATE	BY
A	INITIAL RELEASE	08-30-12	DZ

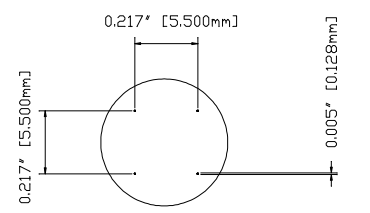
FRONT VIEW
NOT TO SCALE



SIDE VIEW
NOT TO SCALE



PIN	DESC
1	UL
2	LL
3	SENSE
4	LR
5	UR



DETAIL A - DOT SPEC
SCALE 5:1

NOTES:

- SUBSTRATE: 1.8MM ITO GLASS
- ALL DIMENSIONS IN INCHES [MILLIMETERS]
- SAFETY SEAM ON ALL EDGES
- CABLE: 5-PIN FPC TYPE
- CONNECTOR: NON-LATCHING AMP TYPE WITH 0.1" [2.54MM] CENTRES, PART NUMBER 487378-4
- TOUCH SCREEN TO BE ACTIVATED WITHIN ACTIVE AREA ONLY. NON-ACTIVE AREA MUST HAVE SCREENED ON DIELECTRIC AND NO CONDENSED DOTS. VIEWABLE AREA MUST BE TRANSPARENT WITH NO LINEARITY PATTERN VISIBLE.
- TOTAL SENSOR THICKNESS: 0.091" [2.300MM]

ADmetro A D METRO - 1181 PARSIFON ST - OTTAWA, ONTARIO

AD7.0ULTRA

TOLERANCING UNLESS OTHERWISE SPECIFIED	DRAWN BY: DZ	PROJECT/ASSET NO.:	SCALE
DATE: 08-30-12	PROJECT NAME:	SHEET: 1	SHEETS: 1
DO NOT SCALE DRAWING	PART NO. AD-7.0-SRU-01-200		